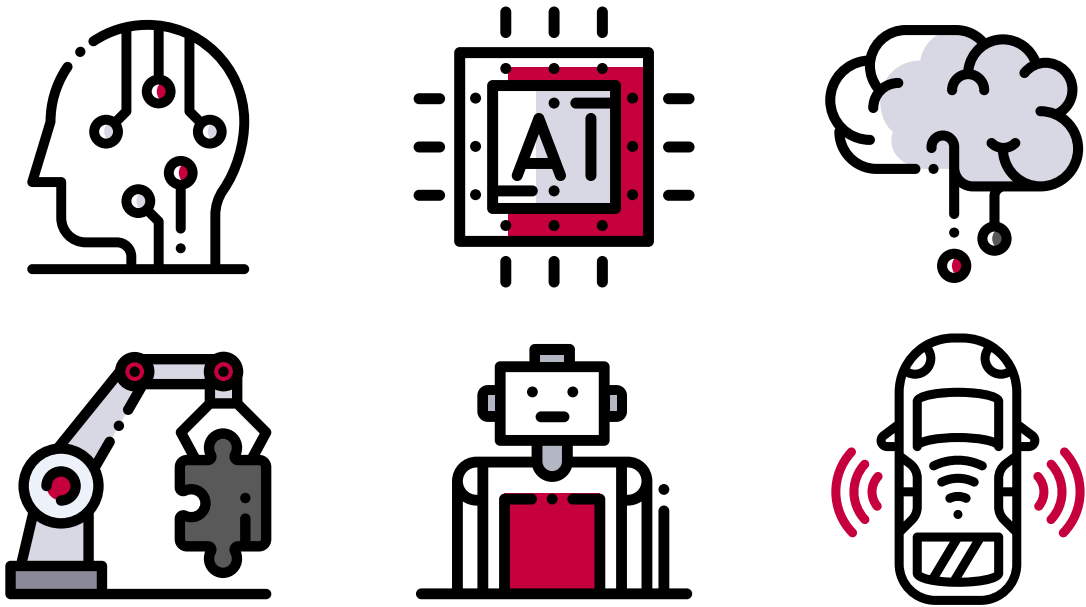


LG전자

해외 우수 R&D 인재 채용



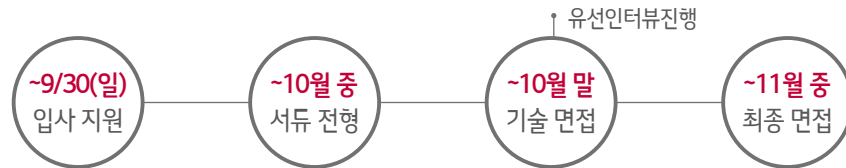
모집기간

2018년 8월 13일(월) ~ 9월 30일(일) 23시 (한국시간 기준)

모집대상

2019년 ~ 20년 졸업예정자(학/석/박사) 또는 기졸업자

전형절차



지원방법

LG Careers 사이트 접속하여 지원

▶ 상세방법

careers.lg.com 접속 → Apply LG → 회원가입 → 추천ID/PW로그인 → 개인로그인 → **[LG전자] 2018 하반기 미국 우수 인재 채용 공고 클릭** → 지원서 작성

▶ 추천ID/PW(대소문자, 공백 구분)
· ID : join2018us · PW : join2018us#

인재등록

www.lgetalent.com · 인증코드 : 2018global



* 학교별 현장 상담시 필요한 모바일 인재카드 등록 절차입니다.
사전에 작성하실 경우 빠른 상담이 가능합니다.
상담에 참여하지 못하더라도 LG전자 인재 Pool로 등록하여 향후 모집 안내, 각종 행사 초대 등 다양한 활동을 통해 여러분들과 소통을 위한 자료로 쓰일 예정입니다.

Contact

careers.lg.com '1대1 문의하기'

LG Electronics Recruiting

모집 분야	세부 내용	사업본부				
		H&A	HE	VC	CTO	소재/생산 기술원
Artificial Intelligence	<ul style="list-style-type: none"> ○ Intelligence & Algorithm <ul style="list-style-type: none"> - Machine Learning, Deep Learning, Reinforcement Learning - Speech Recognition / Natural language processing / Machine Perception - Context Awareness / Computer Vision / Sensor / Audio DSP - Human Machine Interface & Computer Vision 	•	•	•	•	•
	<ul style="list-style-type: none"> ○ Cloud <ul style="list-style-type: none"> - Big data (Data Mining & Analysis) - Cloud Server / Modeling / Web Programming 				•	•
Robotics	<ul style="list-style-type: none"> ○ Interaction <ul style="list-style-type: none"> - Human Robot Interaction / Image Processing & Computer Vision / 3D Vision Reconstruction - Human-robot coordination / Interactive Systems Engineering / Behavior Algorithm 	•		•	•	•
	<ul style="list-style-type: none"> ○ Navigation <ul style="list-style-type: none"> - Pedestrian / Obstacle / People Recognition algorithm - SLAM (Simultaneous Location And Mapping) / AGVs (Automated Guided Vehicles) - People tracking / Motion Prediction / Global & Local Path Planning / Map Interpretation 	•		•	•	•
	<ul style="list-style-type: none"> ○ Manipulation <ul style="list-style-type: none"> - Kinematics & Dynamics / Motion Planning - Hybrid Manipulation Planning and Control / In-hand Sliding / Vibratory / Rolling Manipulation 				•	•
	<ul style="list-style-type: none"> ○ Robot Control R&D <ul style="list-style-type: none"> - Robot SW Platform Design / Embodiment / Control System - BSP Porting / Device Driver Design / RGB-D / Stereo Sensor & control - Advanced Robot Control Technology 	•		•	•	•
Power Electronics	<ul style="list-style-type: none"> ○ Appliance Control R&D <ul style="list-style-type: none"> - Power Electronics / Induction Heating / Wireless Power Transfer / Electronic Signal Transceivers(Smart) / Vision Sensor Application - Fan Design / Flow Path Design / Heat Exchanger Design / Radiation Design - Metal Material / Tribology / Electronic Material 	•			•	•
	<ul style="list-style-type: none"> ○ Motor <ul style="list-style-type: none"> - Motor Design / Motor Cooling / Cooling Circuit Design / Permanent Magnetic AC / DC Motor Design&Development of mass production - Rotor Reliability Design / Vibration / Noise Reliability Design - B-ISG : Belt-Integrated Starter and Generator - System Reliability Test : Rotor Dynamic Reliability Design / Analysis / Vibration / Noise - Drive Unit Structural Design & Cooling System Design / Reducer(Decelerator) Design / Thermal Analysis & Evaluation / Structural Design & Analysis 	•		•	•	•
	<ul style="list-style-type: none"> ○ Inverter <ul style="list-style-type: none"> - DSP / Micom Application Technology Research - Power Electronic Circuit Design & Control / Inverter Drive System - Motor control Algorithm Development(Sensorless / Sensored Control) - Cooling System Design / Thermal 	•		•	•	•
	<ul style="list-style-type: none"> ○ Converter <ul style="list-style-type: none"> - Charger Algorithm Development using DSP / Microprocessor - PFC Control for Single-Phase / Three-Phase / AC-DC Converter - High Efficiency Converter Topology / Passive Element Design & Research - Resonant Converter Design - Cooling System Design / Thermal 	•		•	•	•
Vehicle Component	<ul style="list-style-type: none"> ○ Autonomous Vehicle Driving <ul style="list-style-type: none"> - Mobile Robot or UGV (Unmanned Ground Vehicle) Research - SLAM Algorithm Development / Application - Optimized Path Planning / Tracking Algorithm Research - Proficient C / C++ / Matlab / LabView Programming - Embedded Systems Development 		•	•	•	
	<ul style="list-style-type: none"> ○ Autonomous Vehicle Radar / LiDAR Technology <ul style="list-style-type: none"> - Automotive Radar System Radar and Algorithm Development - Car Radar Antenna Design: Patch Antenna / Phase Array Antenna - Development Car Radar Embedded SW - Car LiDAR System and Algorithm Research 	•	•	•	•	
	<ul style="list-style-type: none"> ○ ADAS <ul style="list-style-type: none"> - Display Application Technology Research / Camera and Optical Design Technology / DSP / Micom Application Design / Wireless protocol / RF Design / Optimal Design - Embedded System Power Management - Machine Vision / Design of Recognition / AP Chip / Radio Tuning / HW Development - Web Platform / HTML5(Open Source Platform) 		•	•	•	
	<ul style="list-style-type: none"> ○ Development for Automobile Lamp <ul style="list-style-type: none"> - LED Head Lamp / Rear Light Distribution / Optical Design Technology - LDM / ADAS Intelligent Control HW Development / Control Algorithm 			•	•	
Image Quality	<ul style="list-style-type: none"> ○ Display Device Image Quality Optimization & SW Algorithm Development <ul style="list-style-type: none"> - Image Processing / Measure and Evaluation / System SW Engineer 		•		•	

※ 상기 내용은 당사 채용 활동을 위한 자료이므로, 당사의 허락은 받지 않은 전체 또는 일부 자료에 대한 무단복제 및 재배포 등은 금합니다.

*약어 설명 - H&A : Home Appliance & Air Solution - HE: Home Entertainment - VC: Vehicle Components

모집 분야	세부 내용	사업본부				
		H&A	HE	VC	CTO	소재/생산 기술원
SW	<ul style="list-style-type: none"> ○ OS/Kernel <ul style="list-style-type: none"> - OS : Android / webOS / Linux Kernel / Device Driver / BSP - OS Kernel / BSP (Memory Management / File System / Open Source Contribution) - Power Saving & Battery Management (Fast Charging) 		●	●	●	
	<ul style="list-style-type: none"> ○ SW Architecture & Application <ul style="list-style-type: none"> - SW Training / SW Infra / SW Architecture / SW Process & Tool / SW Test / SDET - SDK / Technical Evangelism / Mobile App 	●	●	●	●	
	<ul style="list-style-type: none"> ○ Middleware <ul style="list-style-type: none"> - Web technology / Security / Media Streaming - Multimedia(Audio / Camera / Video) - Network & Communication Protocol / LTE-A / Radio / Bluetooth / WiFi / Service / CAN / BAP Protocol / Diagnostic 		●	●	●	
Mechanics	<ul style="list-style-type: none"> ○ HVAC <ul style="list-style-type: none"> - IPMSM Control(Sensor-less Vector / Motor Control) / Single, Three Phase PFC Control - Digital Control / Automatic Control / PSIM or Matlab Simulation / Embedded System - Thermal Fluid Analysis / Fan Design / Performance Analysis - Computational Fluid Dynamics(CFD) / Computer Aided Engineering(CAE) - Heat Exchanger Design / Structural Design / Noise & Vibration / Sheet Metal Forming - Inverter System Algorithms / Logic Design / MotorCompressor Design / Smart Sensors - Waste Heat Recovery System / 2 Phase Flow / Heat Transfer / Cooling System 	●			●	●
	<ul style="list-style-type: none"> ○ Battery Pack / BMS(Battery Management System) <ul style="list-style-type: none"> - Battery Packs for Electrical Vehicles / System Design / Structural Stiffness Design - Safety Design / Cooling System Design / Battery Pack Electric Frame Design 	●		●		●
	<ul style="list-style-type: none"> ○ Mobile Structural Design / Exterior <ul style="list-style-type: none"> - Material / New Material / Surface Treatment / Die Casting 	●		●		●
	<ul style="list-style-type: none"> ○ Appliance R&D <ul style="list-style-type: none"> - Structure Design / Refrigerating Cycle & Thermal Fluid System / Dynamic Analysis / Noise & Vibration - Freshness & Hygiene / Thermoelectric Module / Insulation 	●			●	●
Chip & Circuit	<ul style="list-style-type: none"> ○ Chip <ul style="list-style-type: none"> - Device Modern Chip Protocol SW Development & HW Design / SoC Development / RF Design - Computer Vision Algorithm / Vehicle Semiconductor Design / Computer Architecture or Compiler / Mixed IP Design - Analog Circuit Design / Process Integration / TG / ISP Digital Design / CMOS Image Sensor Test - Automotive SoC Physical Design / Design Methodology Develop and Design Automation 			●	●	
	<ul style="list-style-type: none"> ○ Wireless Technology <ul style="list-style-type: none"> - Wireless (RF / Antenna Design) Charging Technology - Wireless Charging Coil Design / EMI / EMC 			●	●	
Production Engineering	<ul style="list-style-type: none"> ○ Advanced Technology <ul style="list-style-type: none"> - Semiconductor Process(Dry Etch) & Semiconductor Equipment - Applied Optics / Optic Design - AI / Intelligent Algorithm / Machine Learning / Deep Learning / Neural Network - High Power & High Precision Control Design / Design of Precision Mechanism - Atmospheric Pressure Spatial ALD / Large-Area PLD - High-Speed / Low Temp. Sintering of powder or Ink / Paste / microscale Device - Electronic Circuit Design / High Speed Digital Circuit Design / Large Scale Integration - Power Circuit Design / Power Circuit Control / High Power Packaging 			●		●
	<ul style="list-style-type: none"> ○ Automation Technology <ul style="list-style-type: none"> - Coating / Dispensing / Bonding / Laminating / Secondary Battery Technology - Printed Electronics Technology / Roll-to-Roll Transferring Technology - Vehicle Components (Motor / Stator / EV Battery) Equipment Technology - Robot Automation / Transferring (Stocker / AGV / Conveyor) / Logistics Consulting and Engineering 			●		●
	<ul style="list-style-type: none"> ○ Process Technology <ul style="list-style-type: none"> - Patterning Technology / Laser Application / Thermal Process Technology - Vacuum / Deposition / Plasma Application Technology 					●
	<ul style="list-style-type: none"> ○ Inspection & Control Systems <ul style="list-style-type: none"> - Machine Vision / Image processing / Pattern recognition / Image optics / 3D measurement - Electrical inspection / Sensor application / Inkjet printing - Wireless measurement / Digital signal inspection / Power control / Embedded system 			●		●
	<ul style="list-style-type: none"> ○ Production Base Technology <ul style="list-style-type: none"> - Structural / Impact Analysis & Optimization Design / Fluid / Thermal Analysis & Design - Noise & Vibration & Harshness Design Automation & Validation / Prognostic Health Management / Data Analytics - GPU/CPU Architecturing / Parallel Computing Design / AR / VR Programming - Production Environment / Particle Control & Airborne Particulate Monitoring - Welding / Casting / Diecasting / Metal Forming / Molding / Printing / Spray Coating - Glass Forming / Glass Strengthening / Ceramic & Ceramic Spray 					●
	<ul style="list-style-type: none"> ○ Display Device Image Quality Optimization & SW Algorithm Development <ul style="list-style-type: none"> - Production System(Manufacturing Process / Line / Factory) Design & Verification - Production & Operation Management / Optimization of Supply Chain Design - Product Architecture Planning & Optimization / Design Standardization / Product Development Process / Procurement Engineering - Quality Management / TRIZ / Statistical Modeling & Mining of Big Data - Equipment SW Architect / Development of Equipment Operation 					●

※ 상기 내용은 당사 채용 활동을 위한 자료이므로, 당사의 허락은 받지 않은 전체 또는 일부 자료에 대한 무단복제 및 재배포 등은 금합니다.

*약어 설명 - H&A : Home Appliance & Air Solution - HE: Home Entertainment - VC: Vehicle Components

